



1 770-IN-TIN

9 piece 1/2" Sq. Dr. Metric Hexagon Socket Bit Set

Professional Quality, sockets with insert bits. Socket manufactured from chrome vanadium steel hardened, tempered and chrome plated for corrosion protection. The 22mm long bit is titanium coated for improved precision and higher torque. Packed in heavy gauge steel storage case with plastic insert.

Contents: 4, 5, 6, 8, 10, 12, 14, 17 and 19mm

Stock No.	Box Qty	Price per set
66202	-	€256.61D



2 124-S6

13 piece 1/2" Sq. Dr. Double End Swivel Socket Wrench Set

Professional Quality, manufactured from chrome vanadium steel hardened, tempered and chrome plated for corrosion protection. Packed in heavy gauge steel storage case with plastic insert.

Contents:

- 11 hexagon sockets size: 10, 11, 13, 14, 16, 17, 18, 19, 21, 22 and 24mm
- Double ended swivel socket wrench
- Extension bar size: 125mm

Stock No.	Box Qty	Price per set
40965	-	€252.41D



3 124TX

13 piece 1/2" Sq. Dr. †Torx Double End Swivel Screwdriver Socket Wrench Set

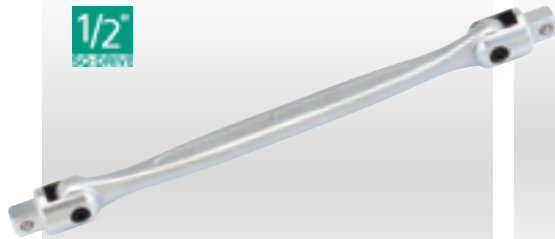
Professional Quality, manufactured from chrome vanadium steel hardened, tempered and chrome plated for corrosion protection. Packed in heavy gauge steel storage case with plastic insert.

Contents:

- 11 †Torx screwdriver sockets size: T25, T27, T30, T40, T45, T50, T55 and T60
- Double ended swivel socket wrench
- Extension bar size: 125mm

†Torx is the registered trademark of Camcar/Textron Inc

Stock No.	Box Qty	Price per set
40966	-	€393.94D



4 124

1/2" Sq. Dr. Double End Swivel Socket Wrench

Professional Quality, manufactured from chrome vanadium steel hardened, tempered and chrome plated for corrosion protection. Use for sockets, socket bits etc. Sold loose.

Stock No.	Box Qty	Price each
40963	-	€97.85D



5

1/2" Sq. Dr. Extension Bars

Manufactured to DIN 3123 Form D/ISO 3316 Specifications

Professional Quality, manufactured from chrome vanadium steel hardened, tempered and chrome plated for corrosion protection. Spring-loaded ball bearing for secure socket holding. Sold loose.

Stock Part No. No.	Length	Box Qty	Price each
25432 770-L4	75mm	6	€14.86D
25440 770-L5	125mm	6	€17.21D
25458 770-L6	250mm	6	€23.76D



6

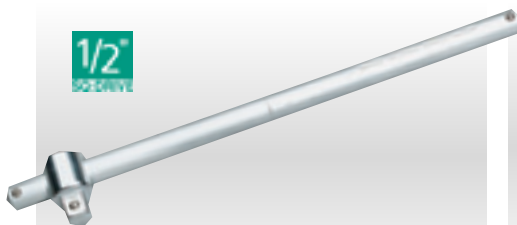
1/2" Sq. Dr. Flexible Handles

Manufactured to DIN 3122 Form F/ISO 3315 Specifications

Professional Quality, manufactured from chrome vanadium steel hardened, tempered and chrome plated for corrosion protection. Plastic impact-resistant hand grip. Spring-loaded ball bearing for secure socket holding. Hinged joint head and positive stops at 0° and 90°. Sold loose.

Stock Part No. No.	Description	Box Qty	Price each
25490 770-L10A	Handle-400mm	-	€64.34D
25507 770-L10B	Handle-450mm	-	€65.18D
80295 Y770-L10	Repair Kit (both)	-	€20.66D

SEE PAGE 169 FOR PRECAUTIONARY INFORMATION ON FLEXIBLE HANDLES



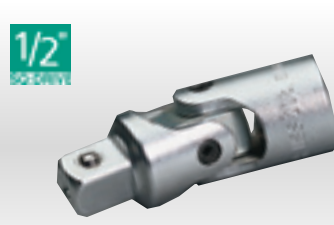
7 770-L3

1/2" Sq. Dr. Sliding Tee Bar

Manufactured to DIN 3122 Form A/ISO 3315 Specifications

Professional Quality, manufactured from chrome vanadium steel hardened, tempered and chrome plated for corrosion protection. Spring-loaded ball bearing for secure socket holding. Sold loose.

Stock No.	Length	Box Qty	Price each
25424	300mm	4	€22.25D



8 770-L7

1/2" Sq. Dr. Universal Joint

Manufactured to DIN 3123 Form C/ISO 3315 Specifications

Professional Quality, manufactured from chrome vanadium steel hardened, tempered and chrome plated for corrosion protection. Head swings through 90° in both directions. Spring-loaded ball bearing for secure socket holding. Sold loose.

Stock No.	Length	Box Qty	Price each
25466	75mm	6	€36.62D

