



**1** TB520/3D

**3 Drawer Tool Chest**

**Expert Quality**, sheet steel with plastic inset lid with storage compartments. Three full width drawers with integral locking system. Two clip type locks and one hasp on lid together with a robust carrying handle. Carton packed.

Configuration:

- 3 full width drawers size: 455 x 189 x 45mm
- Steel lid with plastic top and two storage compartments with four dividers

Stock No.	Dimensions L x W x H	Box Qty	Price each
87808	528 x 224 x 343mm	-	€144.91D



**4** TB584

**Three Drawer Tool Chest**

**Expert Quality**, professional's tool chest manufactured from tough durable plastic. Friction type sliding drawers. Two clip type locks on lid. Integral lock prevents drawers sliding out when in transit. Carton packed.

Configuration:

- 3 drawers size: 450 x 190 x 45mm
- Lid compartment: 560 x 200 x 85mm

Stock No.	Dimensions L x W x H	Box Qty	Price each
87986	585 x 247 x 340mm	-	€93.31D

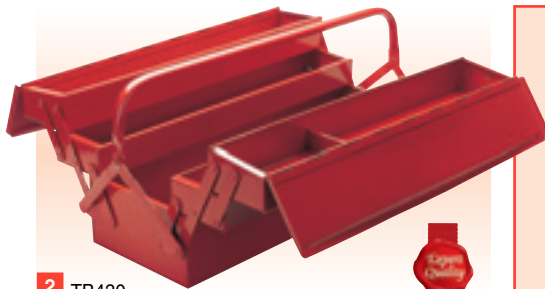


**5** TB584B

**Tool Box**

**Expert Quality**, professional's tool box manufactured from tough durable plastic. Supplied with tote tray size 535 x 200 x 45mm. Two clip type locks on lid and sturdy carrying handle. Carton packed.

Stock No.	Dimensions L x W x H	Box Qty	Price each
87987	584 x 267 x 254mm	-	€52.37D

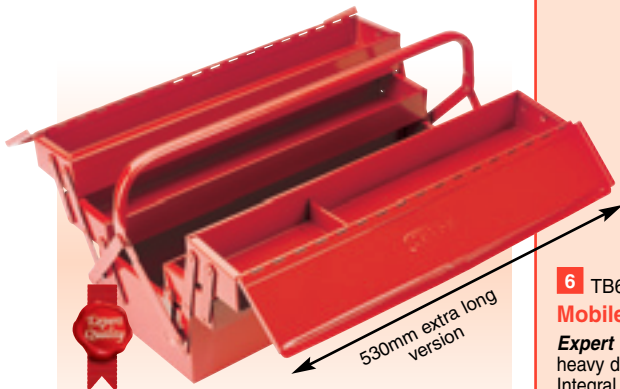


**2** TB430

**4 Tray Cantilever Tool Box**

**Expert Quality**, professional's tool box manufactured from heavy gauge sheet steel, tubular handles and powder coated finish. Trays open automatically when handle is depressed and close when lifted. The lid form incorporates provision for a padlock. Carton packed.

Stock No.	Dimensions L x W x H	Box Qty	Price each
88903	430 x 200 x 210mm	-	€76.39D



**3** TB530

**Extra Long 4 Tray Cantilever Tool Box**

**Expert Quality**, professional's extra long tool box manufactured from heavy gauge sheet steel, tubular handles and powder coated finish. Trays open automatically when handle is depressed and close when lifted. The lid form incorporates provision for a padlock. Carton packed.

Stock No.	Dimensions L x W x H	Box Qty	Price each
88904	530 x 200 x 210mm	-	€89.38D



**6** TB670

**Mobile Tool Chest**


**Expert Quality**, professional's tool box on heavy duty wheels, manufactured from tough durable plastic. Integral telescopic transport handle. Supplied with two tote trays on lid. Detachable lid insert allows both trays to be lifted out simultaneously. Carton packed.

Configuration:

- tool box 675 x 400 x 440mm • tote tray 1: 445 x 290 x 55mm • tote tray 2: 540 x 275 x 130mm

Stock No.	Dimensions L x W x H	Box Qty	Price each
87988	675 x 400 x 440mm	-	€102.07P

**DAVE SAYS**



**QUALITY MAKES THE DIFFERENCE**

These Draper Expert quality tool boxes (Item Nos. 4, 5 and 6 this page and Item No. 1 overleaf) are manufactured from the toughest plastic which is able to withstand the strongest of impacts. The variety available allows choice from a simple tool box to a heavy duty pull-along mobile tool chest for the tradesman who wants all his tools easily accessible at the point of work.

**MOBILE TOOL BOXES**

New mobile Draper Expert Contractors Chest and Tool Box shown overleaf and a new mobile tool chest shown on page 353.

**Important Box Qty info:** For your convenience we recommend ordering in box quantity or multiples of box quantity where shown. **You can still order in any quantity** unless specifically stated otherwise.