

**PAUL SAYS**

**WORKING OUT YOUR LOADING**

To calculate the safe working load (SWL) for each castor take the weight of load in kilograms and divide by the number of castors minus one, e.g. 100kg divide by 3 (4 wheels minus 1) = 33kg. So each castor would need to be rated at a maximum S.W.L. of 33kg.



**QUALITY ASSURANCE MAKES THE DIFFERENCE**

# rubber & nylon castors

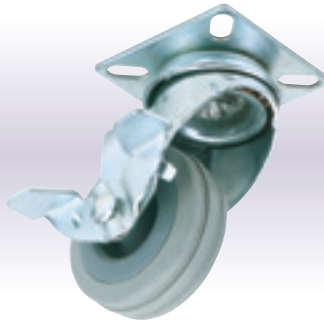


**3** 602

**Rubber Wheeled Swivel Plate Castors**

Swivel plate fixing. Non-marking tyres. Sold in polybag with label.

Stock No.	Wheel Diameter	Max. S.W.L.	Box Qty	Price each
65468	50mm	50kg	-	€3.34D
65473	75mm	70kg	-	€5.57D
65478	100mm	80kg	-	€7.97D



**4** 602

**Rubber Wheeled Swivel Plate Castors with Brake**

Swivel plate fixing with brake. Non-marking tyres. Sold in polybag with label.

Stock No.	Wheel Diameter	Max. S.W.L.	Box Qty	Price each
65469	50mm	50kg	-	€3.86D
65474	75mm	70kg	-	€6.46D
65479	100mm	80kg	-	€8.88D



**2** 602

**Rubber Wheeled Swivel Bolt Castors with Brake**

12mm diameter swivel bolt fixing with brake. Non-marking tyres. Sold in polybag with label.

Stock No.	Wheel Diameter	Max. S.W.L.	Box Qty	Price each
65471	50mm	50kg	-	€5.35D
65476	75mm	70kg	-	€8.38D
65481	100mm	80kg	-	€12.38D



**5** 602

**Rubber Wheeled Fixed Plate Castors**

Fixed plate fixing. Non-marking tyres. Sold in polybag with label.

Stock No.	Wheel Diameter	Max. S.W.L.	Box Qty	Price each
65472	50mm	50kg	-	€2.33D
65477	75mm	70kg	-	€5.18D
65482	100mm	80kg	-	€7.58D



**6** 60140B

**40mm Twin Nylon Bolt Castor**

10mm diameter swivel bolt fixing. Internal use only on furniture etc. Sold in polybag with label.

Stock No.	Max. S.W.L.	Box Qty	Price each
65464	25kg	-	€0.98D



**7** 60140BB

**40mm Twin Nylon Bolt Castor with Brake**

10mm diameter swivel bolt fixing with brake. Internal use only on furniture etc. Sold in polybag with label.

Stock No.	Max. S.W.L.	Box Qty	Price each
65465	25kg	-	€1.15D



**8** 60140P

**40mm Twin Nylon Swivel Plate Castor**

Swivel plate fixing. Internal use only on furniture etc. Sold in polybag with label.

Stock No.	Max. S.W.L.	Box Qty	Price each
65462	25kg	-	€0.98D



**9** 60140PB

**Twin Nylon Swivel Plate Castor with Brake**

Swivel plate fixing with brake. Internal use only on furniture etc. Sold in polybag with label.

Stock No.	Wheel Diameter	Max. S.W.L.	Box Qty	Price each
65463	40mm	25kg	-	€1.15D



**10** 60140L

**40mm Twin Nylon Swivel Plug Castor**

10mm diameter swivel plug fixing. Internal use only on furniture etc. Sold in polybag with label.

Stock No.	Max. S.W.L.	Box Qty	Price each
65466	25kg	-	€1.49D



**11** 60140LB

**40mm Twin Nylon Swivel Plug Castor with Brake**

10mm diameter swivel plug fixing with brake. Internal use only on furniture etc. Sold in polybag with label.

Stock No.	Max. S.W.L.	Box Qty	Price each
65467	25kg	-	€1.70D

**Important Box Qty info:** For your convenience we recommend ordering in box quantity or multiples of box quantity where shown. You can still order in any quantity unless specifically stated otherwise.