



1 RP12

**220mm Revolving Punch Pliers**

Pressed steel frame with plastic coated handles. Revolving head has six punches size: 2, 2.5, 2.8, 3.2, 4.0 and 4.8mm. Display packed.

Stock No.	Box Qty	Price each
11176	4	€13.01D



2 HP

**210mm Interchangeable Hole Punch and Eyelet Pliers**

This handy tool can be used as a conventional hole punch (6 sizes supplied) on soft materials, or to join soft materials together using the special punch and die head and eyelets supplied. Supplied complete with a quantity of eyelets. Additional eyelets are available separately - see entry. Display packed.

Stock No.	Description	Box Qty	Price each
31096	Hole Punch	4	€13.94D
31108	*500 x 4mm eyelets	4	€3.94D

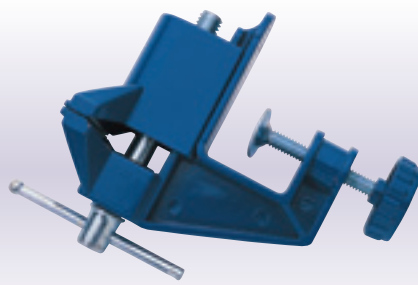


3 HH

**Helping Hand Bracket**

Useful bracket suitable for electronic work, model and jewellery making. Complete with fully adjustable holding clips and a 60mm diameter glass magnifying lens (x 2.0 magnification). The solid cast base improves stability. Display packed.

Stock No.	Box Qty	Price each
31324	4	€8.47D



4 VC50H

**55mm Hobby Vice**

Diecast aluminium with plated jaws and bench clamp. Display carton.

Stock No.	Jaw Opening	Box Qty	Price each
14145	50mm	2	€17.83D

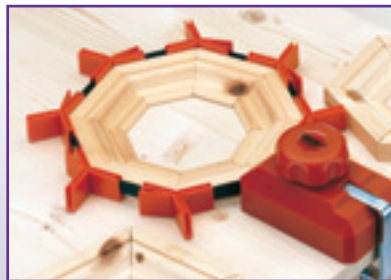


5 HV100

**36mm Hand Vice**

Hand held vice for the secure clamping of component parts prior to grinding, drilling, etc. Carton packed.

Stock No.	Jaw Opening	Box Qty	Price each
30785	19mm	-	€10.13D



6 FC200

**Frame Clamp**

Designed for assembling picture frames or other articles of various sizes and configurations prior to gluing or fixing. Tension is maintained by means of a strap linked to the tensioning unit and corner pieces. The corner pieces are suitable for clamping angles of 90°, 120° and 135°. Strap length 4M (approx). Supplied complete with bench clamp for secure bench mounting. Display packed.

Stock No.	Box Qty	Price each
20059	-	€24.58D



7 ENG1

**Engraver**

Battery-powered diamond tipped engraver suitable for engraving most surfaces including, glass, ceramics and metals. Belt-clip and 1.75M (approx.) power lead. Runs off 4 x AA size batteries (sold separately). Display packed.

Stock Part No.	Description	Box Qty	Price each
52345	ENG1 Engraver	-	€26.88D
52378	YENG1 Spare Tip	-	€5.62D
61834	DLR6/HD Batteries (4 x AA)	-	€3.72D



**IDEAL FOR SECURITY ETCHING**

8 EN2

**12V Engraver**

Diamond tipped engraver suitable for engraving most surfaces including, glass, ceramics and metals. Supplied complete with three diamond tips, 230V transformer and 1.1M of cable. Display packed.

Stock No.	Box Qty	Price each
78989	6	€27.58D