

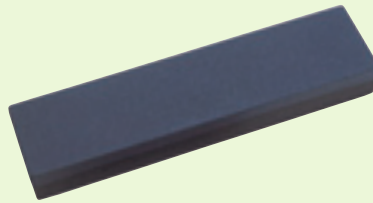


**1** DWC

**120mm Bevel Edge Wood Chisels**

Blades manufactured from carbon steel hardened and tempered with blade guards. PVC oval handles. Display packed.

Stock No.	Blade Width	Box Qty	Price each
69643	12mm	-	£4.10D
69644	19mm	-	£4.46D
69645	25mm	-	£4.68D

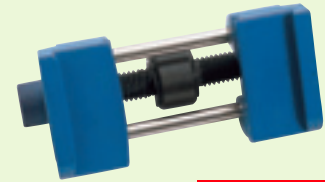


**4** 1004/1

**Sharpening Stones**

A range of silicon carbide stones with combination fine and medium sharpening surfaces. Display packed.

Stock No.	Size	Box Qty	Price each
74697	100 x 25 x 12mm	-	£3.08D
65737	200 x 50 x 25mm	4	£6.82D



**ESSENTIAL TOOL FOR ACCURATE CHISEL HONING**

**7** HG1

**Honing Guide**

This accurately formed diecast guide will accept bevel edged chisels or plane irons sized 3mm to 67mm, setting them at the correct angle for honing. Display packed.

Stock No.	Box Qty	Price each
12400	2	£10.86D



**2** WCS/4

**4 piece 120mm Bevel Edge Wood Chisel Set**

Blades manufactured from carbon steel hardened and tempered with PVC oval shaped handles. Display packed.

Contents:10, 12, 19 and 25mm

Stock No.	Box Qty	Price per set
69619	6	£13.04D

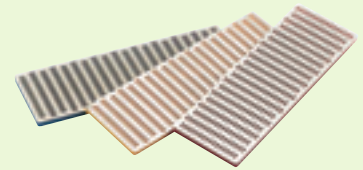


**5** 45A

**Sharpening Stone Box**

Impact resistant plastic. Will accept a 200 x 50 x 25mm stone. Display packed.

Stock No.	Box Qty	Price each
29520	-	£2.52D



**8** DWS/SET

**3 piece Diamond Whetstone Set**

For sharpening chisels, scissors, shears, scrapers, knives etc. Comprises coarse, medium and fine stones. Stone size: 152 x 50 x 4.2mm. Supplied in plastic wallet. Display packed.

Stock No.	Box Qty	Price per set
72388	-	£26.54D



**3** DWCS/4

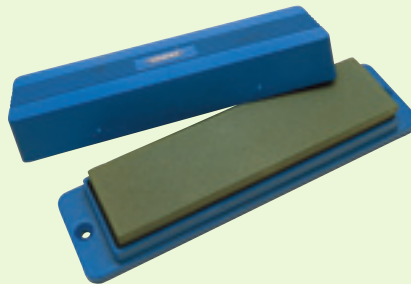
**4 piece 120mm Bevel Edge Wood Chisel Sets**

Blades manufactured from carbon steel hardened and tempered with PVC oval shaped handles. Multiples of eight sets only, supplied in countertop display.

Contents:10, 12, 19 and 25mm

**Minimum order eight sets or multiples thereof**

Stock No.	Box Qty	Price per set
46306	8	£13.04D



**6** 1008/45A

**Sharpening Stone and Box**

Comprising Stock No.65737 Sharpening Stone with fine and medium sharpening surfaces and Stock No.29520 impact resistant Sharpening Stone Box. Display packed.

Stock No.	Box Qty	Price each
31696	2	£8.90D



**9** 305/L

**490g Beechwood Mallet**

**Expert Quality**, with solid head and angled striking faces. Tapered morticed shaft. Average face size 80 x 55mm. Sold loose.

Stock No.	Box Qty	Price each
45237	-	£11.60D

**Important Box Qty info:** For your convenience we recommend ordering in box quantity or multiples of box quantity where shown. **You can still order in any quantity** unless specifically stated otherwise.