

## saws and woodworking tools



1 DWC

### 120mm Bevel Edge Wood Chisels

Blades manufactured from carbon steel hardened and tempered with blade guards. PVC oval handles. Display packed.

Stock No.	Blade Width	Box Qty	Price each
69643	12mm	-	£4.50D
69644	19mm	-	£4.90D
69645	25mm	-	£5.14D



2 WCS/4

### 4 piece 120mm Bevel Edge Wood Chisel Set

Blades manufactured from carbon steel hardened and tempered with PVC oval shaped handles. Display packed.

Contents: 10, 12, 19 and 25mm

Stock No.	Box Qty	Price per set
69619	6	£15.12D



3 DWCS/4

### 4 piece 120mm Bevel Edge Wood Chisel Sets

Blades manufactured from carbon steel hardened and tempered with PVC oval shaped handles. Multiples of eight sets only, supplied in countertop display.

Contents: 10, 12, 19 and 25mm

Minimum order eight sets or multiples thereof

Stock No.	Box Qty	Price each
46306	8	£15.12D

### DAVE SAYS

WOOD CHISELS - All quality wood chisels are only shipped with the edge ground. They will need to be fine honed with an oil stone prior to use. A Honing Guide (Item No. 7 - shown right) will help you achieve the perfectly angled cutting edge.



QUALITY MAKES THE DIFFERENCE



4 1004/1

### Sharpening Stones

A range of silicon carbide stones with combination fine and medium sharpening surfaces. Display packed.

Stock No.	Size	Box Qty	Price each
74697	100 x 25 x 12mm	-	£3.38D
65737	200 x 50 x 25mm	4	£8.18D

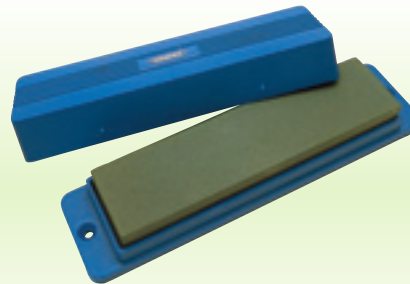


5 45A

### Sharpening Stone Box

Impact resistant plastic. Will accept a 200 x 50 x 25mm stone. Display packed.

Stock No.	Box Qty	Price each
29520	-	£2.66D



6 1008/45A

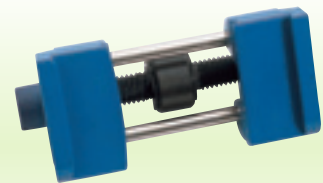
### Sharpening Stone and Box

Comprising Stock No.65737 Sharpening Stone with fine and medium sharpening surfaces and Stock No.29520 impact resistant Sharpening Stone Box. Display packed.

Stock No.	Box Qty	Price each
31696	2	£9.36D

## section 6

## DRAPER



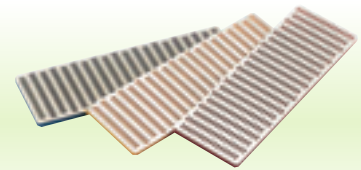
ESSENTIAL TOOL FOR ACCURATE CHISEL HONING

7 HG1

### Honing Guide

This accurately formed diecast guide will accept bevel edged chisels or plane irons sized 3mm to 67mm, setting them at the correct angle for honing. Display packed.

Stock No.	Box Qty	Price each
12400	2	£11.92D



8 DWS/SET

### 3 piece Diamond Whetstone Set

For sharpening chisels, scissors, shears, scrapers, knives etc. Comprises coarse, medium and fine stones. Stone size: 152 x 50 x 4.2mm. Supplied in plastic wallet. Display packed.

Stock No.	Box Qty	Price per set
72388	-	£29.14D



9 305/L

### 490g Beechwood Mallet

Expert Quality, with solid head and angled striking faces. Tapered morticed shaft. Average face size 80 x 55mm. Sold loose.

Stock No.	Box Qty	Price each
45237	-	£12.18D