

1 CTB640

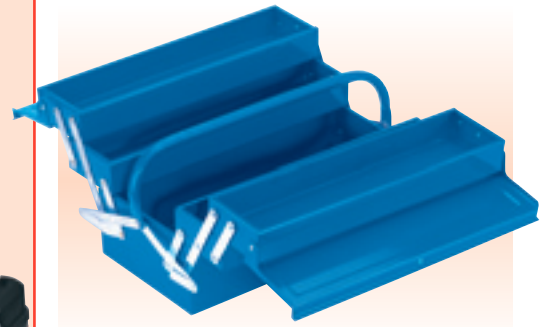
Mobile Contractors Chest and Tool Box

Expert Quality, professional's tool chest and box in one unit on wheeled trolley with telescopic handle and kick plate. Each box is manufactured from tough durable plastic construction with steel locking latches. The chest has handles to facilitate lifting and rubber feet for protection. The tool box has a full size carrying handle and removable top organizer with 11 compartments. For safety when using the trolley, the tool chest and tool box can be locked together. Carton packed.

Configuration:

- tool box (external): 560 x 280 x 250mm
- tool box tote tray (internal): 515 x 225 x 50mm
- tool box organiser (external): 390 x 170 x 33mm
- chest (external): 640 x 400 x 445mm
- chest tote tray (internal): 959 x 290 x 90mm

Stock No.	Box Qty	Price each
03080	-	£113.04P



6 TB404

Four Tray Cantilever Tool Box

General purpose tool box manufactured from sheet steel with tubular handles and lacquered finish. Trays open automatically when handle is depressed and close when lifted. The lid form incorporates provision for a padlock. Carton packed.

Stock No.	Dimensions L x W x H	Box Qty	Price each
86672	430 x 220 x 210mm	-	£52.36D



2 TC2B

2 Drawer Tool Chest/Tool Box

Suitable for the storage of small hand tools. Piano hinged lid and top storage area. Heavy gauge sheet steel with powder coated finish. Drawers fitted with ball bearing runners for smooth operation and EVA foam liners. Secure integral locking system with two keys. Inset handles at both ends. Carton packed.

Configuration:

- 2 full width drawers: 365 x 205 x 52mm
- tool storage area: 455 x 230 x 60mm

Stock No.	Dimensions L x W x H	Box Qty	Price each
03243	460 x 240 x 250mm	-	£44.96P

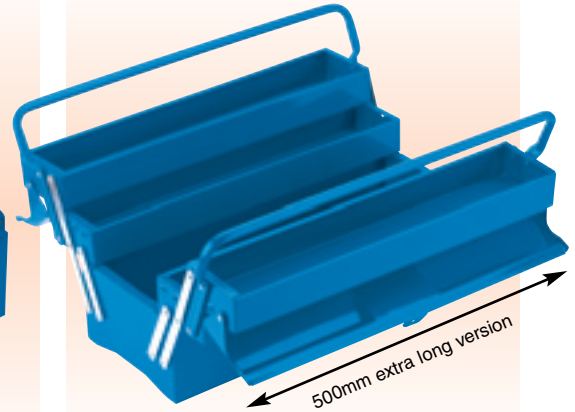


4 TB484

Barn Type Tool Box

General purpose tool box manufactured from sheet steel with plastic tote tray size 455 x 125 x 40mm. Clip type lock on the lid which also incorporates provision for a padlock. Carton packed.

Stock No.	Dimensions L x W x H	Box Qty	Price each
86675	485 x 180 x 170mm	-	£33.48D

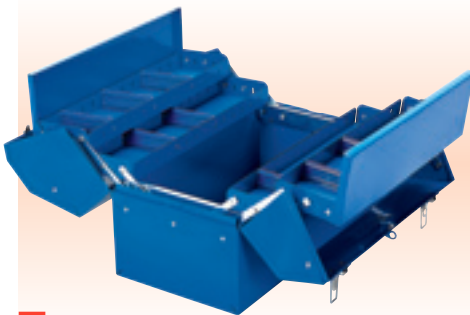


7 TB495

Extra Long Four Tray Cantilever Tool Box

General purpose extra long tool box (540mm) manufactured from sheet steel with tubular handles and lacquered finish. Trays open automatically when handle is depressed and close when lifted. The lid form incorporates provision for a padlock. Carton packed.

Stock No.	Dimensions L x W x H	Box Qty	Price each
86671	500 x 297 x 210mm	-	£57.50D



3 TB459B

Barn Type Tool Box with Four Cantilever Trays

General purpose tool box manufactured from sheet steel with lacquered finish. Trays open automatically when handle is depressed and close when lifted. The lid form incorporates provision for a padlock. Carton packed.

Stock No.	Dimensions L x W x H	Box Qty	Price each
48566	460 x 335 x 257mm	-	£84.36D



5 TB404B

Two Tray Cantilever Tool Box

General purpose tool box manufactured from sheet steel with tubular handles and lacquered finish. Trays open automatically when handle is depressed and close when lifted. The lid form incorporates provision for a padlock. Carton packed.

Stock No.	Dimensions L x W x H	Box Qty	Price each
86673	430 x 170 x 210	-	£46.90D



8 TB510

Tool Box

Sheet steel with steel tote tray size 490 x 200 x 45mm. Sturdy carrying handle with two clip type locks on the lid which also incorporates provision for a padlock. Carton packed.

Stock No.	Dimensions L x W x H	Box Qty	Price each
86674	513 x 260 x 230mm	-	£51.96D