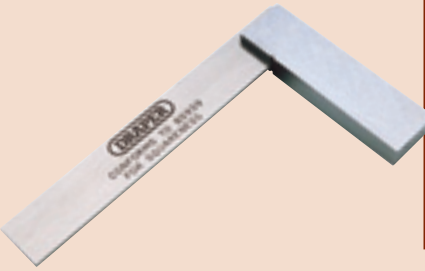


1 41

Engineers Precision Squares

Manufactured to BS 939 Workshop Grade B for squareness tolerance only
Solid steel stocks with hardened, tempered and finely polished blades. The squareness of the blade edges and the stock working face falls within $\pm 0.016\text{mm}/0.0064''$ tolerance. Display packed.

Stock No.	Size	Box Qty	Price each
34049	100mm	-	£16.56D
34065	150mm	-	£22.56D



PAUL SAYS

PRECISION ENGINEERS SQUARES (Stock Nos. 34049 & 34065) - Two of the few Engineers Squares that conform to BS939, workshop grade B for squareness. This guarantees the solid steel stock will never be more or less than 0.0064" from square. To all intents and purposes... that's square!



QUALITY ASSURANCE MAKES THE DIFFERENCE

2 7324

engineers scribers

200mm Engineers Scriber

Double ended hardened scriber with straight and 90° hardened points. Display packed.

Stock No.	Box Qty	Price each
34099	-	£5.54D

2

3 7325

125mm Engineers Pocket Scriber

Reversible scriber point. Body fitted with pocket clip. Display packed.

Stock No.	Box Qty	Price each
34104	5	£5.90D

3

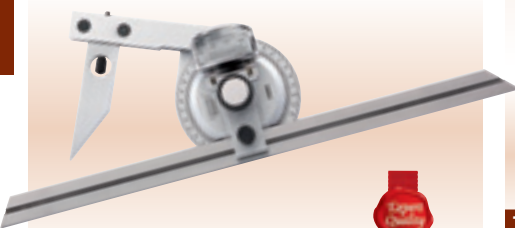
4 PCS

150mm Carbide Tip Pocket Scriber

Plated steel body with carbide tip and pocket clip. For marking on hard and soft materials including steel and ceramics. Display packed.

Stock No.	Box Qty	Price each
37349	5	£4.82D

4



5 PBPS

Universal Bevel Protractor Set

Expert Quality, for accurate angle measurement of machines, moulds and jigs. Can also be used for assembling and machining. Fully calibrated to 360° with magnifying glass. Supplied complete with 300mm plain rule and acute angle attachment. Display packed in hinged plastic case.

Stock No.	Box Qty	Price per set
52430	-	£59.50D



6 PDG

Protractor with Depth Gauge

Graduated 0-180° with depth gauge 0-150mm. Display packed.

Stock No.	Box Qty	Price each
37342	2	£18.48D

7

Stainless Steel Rules

To JIS (Japanese Industrial Standard)

Expert Quality, precision rules manufactured from hardened stainless steel matt chrome plated. The clear black graduations of 1/2mm, mm, 1/2cm, cm and 1/64", 1/50", 1/32", 1/20", 1/16", 1/10", 1/2", and inches on the reverse are permanently etched for long service life. All rules are packed into vinyl wallets with Stock No.12613 and 12614 on display cards.

Stock No.	Part No.	Marked Length	Box Qty	Price each
12613	SSR6	150mm & 6"	-	£4.54D
12614	SSR12	300mm & 12"	-	£11.34D
12615	SSR24	600mm & 24"	-	£22.66D
12616	SSR36	1000mm & 36"	-	£43.78D



8

Steel Rules

Double sided with hang hole. Permanently etched graduations of cm/mm and inches, 1/8", 1/16", 1/32" and 1/8". Display packed.

Stock No.	Part No.	Marked Length	Rule Width	Box Qty	Price each
59633	D17	150mm/6"	19mm	-	£2.34D
59641	D18	300mm/12"	30mm	-	£3.92D

