

PAUL SAYS

WORKING OUT YOUR LOADING

To calculate the safe working load (SWL) for each castor take the weight of load in kilograms and divide by the number of castors minus one, e.g. 100kg divide by 3 (4 wheels minus 1) = 33kg. So each castor would need to be rated at a maximum S.W.L. of 33kg.



QUALITY ASSURANCE MAKES THE DIFFERENCE

rubber & nylon castors

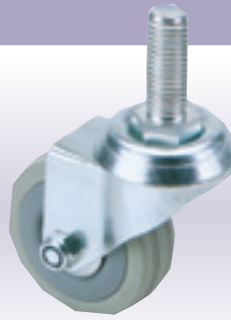


3 602

Rubber Wheeled Swivel Plate Castors

Swivel plate fixing. Non-marking tyres. Sold in polybag with label.

Stock No.	Wheel Diameter	Max. S.W.L.	Box Qty	Price each
65468	50mm	50kg	-	£2.78D
65473	75mm	70kg	-	£4.64D
65478	100mm	80kg	-	£6.64D



1 602

Rubber Wheeled Swivel Bolt Castors

12mm diameter swivel bolt fixing. Non-marking tyres. Sold in polybag with label.

Stock No.	Wheel Diameter	Max. S.W.L.	Box Qty	Price each
65470	50mm	50kg	-	£4.00D
65475	75mm	70kg	-	£5.84D
65480	100mm	80kg	-	£8.68D

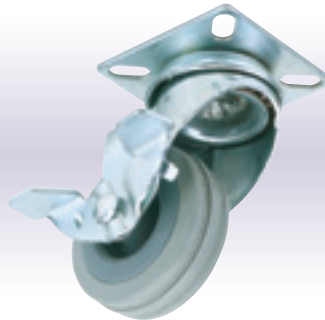


2 602

Rubber Wheeled Swivel Bolt Castors with Brake

12mm diameter swivel bolt fixing with brake. Non-marking tyres. Sold in polybag with label.

Stock No.	Wheel Diameter	Max. S.W.L.	Box Qty	Price each
65471	50mm	50kg	-	£4.46D
65476	75mm	70kg	-	£6.98D
65481	100mm	80kg	-	£10.32D



4 602

Rubber Wheeled Swivel Plate Castors with Brake

Swivel plate fixing with brake. Non-marking tyres. Sold in polybag with label.

Stock No.	Wheel Diameter	Max. S.W.L.	Box Qty	Price each
65469	50mm	50kg	-	£3.22D
65474	75mm	70kg	-	£5.38D
65479	100mm	80kg	-	£7.40D



5 602

Rubber Wheeled Fixed Plate Castors

Fixed plate fixing. Non-marking tyres. Sold in polybag with label.

Stock No.	Wheel Diameter	Max. S.W.L.	Box Qty	Price each
65472	50mm	50kg	-	£1.94D
65477	75mm	70kg	-	£4.32D
65482	100mm	80kg	-	£6.32D



6 60140B

40mm Twin Nylon Bolt Castor

10mm diameter swivel bolt fixing. Internal use only on furniture etc. Sold in polybag with label.

Stock No.	Max. S.W.L.	Box Qty	Price each
65464	25kg	-	£0.82D



7 60140BB

40mm Twin Nylon Bolt Castor with Brake

10mm diameter swivel bolt fixing with brake. Internal use only on furniture etc. Sold in polybag with label.

Stock No.	Max. S.W.L.	Box Qty	Price each
65465	25kg	-	£0.96D



8 60140P

40mm Twin Nylon Swivel Plate Castor

Swivel plate fixing. Internal use only on furniture etc. Sold in polybag with label.

Stock No.	Max. S.W.L.	Box Qty	Price each
65462	25kg	-	£0.82D



9 60140PB

Twin Nylon Swivel Plate Castor with Brake

Swivel plate fixing with brake. Internal use only on furniture etc. Sold in polybag with label.

Stock No.	Wheel Diameter	Max. S.W.L.	Box Qty	Price each
65463	40mm	25kg	-	£0.96D



10 60140L

40mm Twin Nylon Swivel Plug Castor

10mm diameter swivel plug fixing. Internal use only on furniture etc. Sold in polybag with label.

Stock No.	Max. S.W.L.	Box Qty	Price each
65466	25kg	-	£1.24D



11 60140LB

40mm Twin Nylon Swivel Plug Castor with Brake

10mm diameter swivel plug fixing with brake. Internal use only on furniture etc. Sold in polybag with label.

Stock No.	Max. S.W.L.	Box Qty	Price each
65467	25kg	-	£1.42D

Important Box Qty info: For your convenience we recommend ordering in box quantity or multiples of box quantity where shown. **You can still order in any quantity** unless specifically stated otherwise.