



1 RP12

220mm Revolving Punch Pliers

Pressed steel frame with plastic coated handles. Revolving head has six punches size: 2, 2.5, 2.8, 3.2, 4.0 and 4.8mm. Display packed.

Stock No.	Box Qty	Price each
11176	4	£10.84D



2 HP

210mm Interchangeable Hole Punch and Eyelet Pliers

This handy tool can be used as a conventional hole punch (6 sizes supplied) on soft materials, or to join soft materials together using the special punch and die head and eyelets supplied. Supplied complete with a quantity of eyelets. Additional eyelets are available separately - see entry. Display packed.

Stock No.	Description	Box Qty	Price each
31096	Hole Punch	4	£11.62D
31108	*500 x 4mm eyelets	4	£3.28D

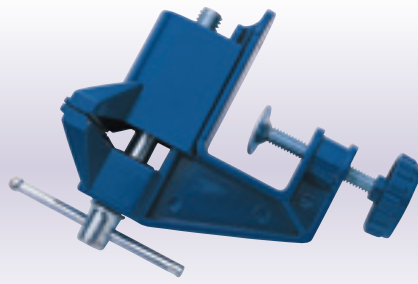


3 HH

Helping Hand Bracket

Useful bracket suitable for electronic work, model and jewellery making. Complete with fully adjustable holding clips and a 60mm diameter glass magnifying lens (x 2.0 magnification). The solid cast base improves stability. Display packed.

Stock No.	Box Qty	Price each
31324	4	£7.06D



4 VC50H

55mm Hobby Vice

Diecast aluminium with plated jaws and bench clamp. Display carton.

Stock No.	Jaw Opening	Box Qty	Price each
14145	50mm	2	£14.86D

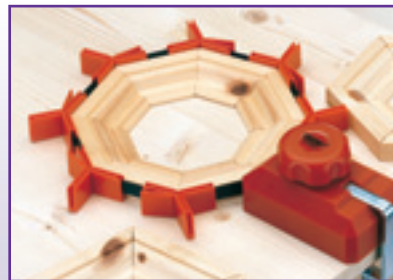


5 HV100

36mm Hand Vice

Hand held vice for the secure clamping of component parts prior to grinding, drilling, etc. Carton packed.

Stock No.	Jaw Opening	Box Qty	Price each
30785	19mm	-	£8.44D



6 FC200

Frame Clamp

Designed for assembling picture frames or other articles of various sizes and configurations prior to gluing or fixing. Tension is maintained by means of a strap linked to the tensioning unit and corner pieces. The corner pieces are suitable for clamping angles of 90°, 120° and 135°. Strap length 4M (approx). Supplied complete with bench clamp for secure bench mounting. Display packed.

Stock No.	Box Qty	Price each
20059	-	£20.48D



7 ENG1

Engraver

Battery-powered diamond tipped engraver suitable for engraving most surfaces including, glass, ceramics and metals. Belt-clip and 1.75M (approx.) power lead. Runs off 4 x AA size batteries (sold separately). Display packed.

Stock Part No.	Description	Box Qty	Price each
52345 ENG1	Engraver	-	£22.40D
52378 YENG1	Spare Tip	-	£4.68D
61834 DLR6/HD	Batteries (4 x AA)	-	£3.10D



IDEAL FOR SECURITY ETCHING

8 EN2

12V Engraver

Diamond tipped engraver suitable for engraving most surfaces including, glass, ceramics and metals. Supplied complete with three diamond tips, 230V transformer and 1.1M of cable. Display packed.

Stock No.	Box Qty	Price each
78989	6	£22.98D