

**NEW**



**1** WTL330  
**250W 230V Variable Speed Mini Wood Lathe**

**No-volt safety switch**

Ideal for use on a workbench, this lathe has variable speeds allowing the user to carry out various woodturning operations. Fitted with a 200mm swing over bed, the lathe is fitted with a no-volt overload safety switch and a BS approved non-rewireable 3 pin moulded plug and cable. Heavy duty cast iron bed. Supplied complete with 50mm and 150mm face plates, 175mm tool rest and 3/4" drive spur. Display packed.

**Specification:**

Turning capacity;	
- diameter	... 200mm
- between centres	... 300mm
Speeds-variable	... 750-3200 r/min
Spindle thread size	... 3/4" x 16tpi
Spindle taper	... MT1
Overall length	... 700mm
Weight	... 21kg

Stock No.	Box Qty	Price each
07989	-	£174.50P



**PRODUCT INFORMATION**

This symbol appears next to products that can only be delivered on a pallet. Prior to purchase, please ensure you have adequate facilities to unload palletized deliveries. Deliveries can be arranged using specialised transport, but this will incur additional delivery costs.



**2** WTL95  
**550W 230V Variable Speed Wood Lathe with Stand**

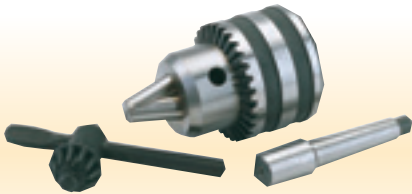
**No-volt safety switch**

Ten speed positions allowing the user to carry out various woodturning operations. Fitted with a revolving headstock suitable for large and small bowl turning which can travel along the full length of the cast iron bed. The lathe is fitted with a powerful induction motor, no-volt overload safety switch and a BS approved non-rewireable 3 pin moulded plug and cable. Supplied complete with purpose-made stand, tool rest, four prong drive centre and revolving tailstock. Display packed on pallet.

**Specification:**

Turning capacity;		Spindle thread size	... 3/4" x 16tpi
- diameter	... 360mm	Spindle taper	... MT1
- between centres	... 1100mm	Overall length	... 1560mm
10 speeds-variable	... 500-2000 r/min	Weight	... 92kg

Stock No.	Box Qty	Price each
63938	-	£496.88P



**3** AWL1  
**Tailstock Chuck and Arbor Set**

For accurate drilling of workpieces. For accurate drilling of workpieces. Comprises : 1/2" drill chuck and key with MT1 tailstock arbor. For use with Draper Wood Lathes Stock No. 63938 and other manufacturers similar machines. Display packed.

Stock No.	Box Qty	Price per set
29422	-	£41.06D



**4** AWL3  
**Screw Chuck**

Thread size: 3/4" x 16 TPI. For use with Draper Wood Lathes Stock No. 63938 and other manufacturers similar machines. Display packed.

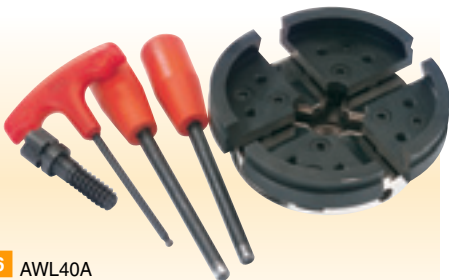
Stock No.	Box Qty	Price each
29424	-	£40.30D



**5** AWL8A  
**150mm Right Hand Thread Face Plate**

Thread size 3/4" x 16 TPI. For use with Draper Wood Lathe Stock No. 63938 and other manufacturers similar machines. Display packed.

Stock No.	Box Qty	Price each
44134	-	£23.42D



**6** AWL40A  
**Combination Chuck**

Puts less strain on lathe bearings. Slide in jaws assist accuracy. Capacity: expansion 98-137mm; compression 123-83mm. Supplied complete with dovetail jaws, screw chuck, two tommy bars and T handle. Different types of jaws are available separately - see table. Carton packed.

Stock No.	Description	Box Qty	Price each
89595	Chuck 3/4" x 16tpi	-	£160.16D
40392	Step-Type Jaws	-	£33.74D
40393	Pin-Type Jaws	-	£36.82D



**7** FS8  
**Faceshield**

Clear polycarbonate. Providing a clear view with adjustable browguard, sweatband and harness. Display packed.

Stock No.	Description	Box Qty	Price each
33831	Faceshield	-	£34.32D
33882	Spare Visor	-	£14.82D



**8** AWL44  
**6 piece HSS Woodturning Chisel Set**

Hardened blades with brass ferrules. Ash handles. Packed in wooden storage box. Contents: • Bowl Gouge with 12.7mm (1/2") blade • Roughing Gouge with 25mm (1") blade • Oval Skew with 25mm (1") blade • Parting Tool with 5.5mm (7/32") blade • Round Nose Scraper with 25mm (1") blade • Spindle Gouge with 10mm (3/8") blade

Stock No.	Box Qty	Price per set
58697	-	£181.08D

**Important Box Qty info:** For your convenience we recommend ordering in box quantity or multiples of box quantity where shown. **You can still order in any quantity** unless specifically stated otherwise.